

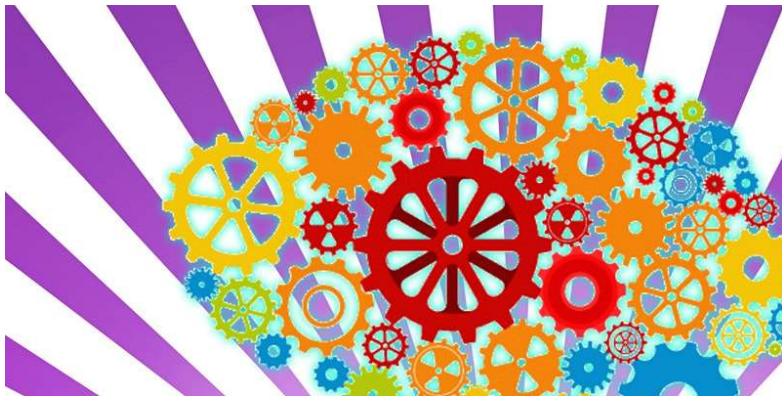
MIAMI-DADE
IDEAS
CONSORTIUM
FOR CHILDREN



INTEGRATING DATA FOR EFFECTIVENESS ACROSS SYSTEMS

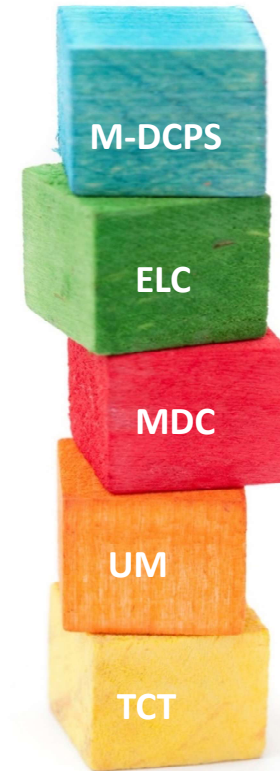
IDEAS Consortium Presentation and Breakout Session

The 3rd Biennial National Synergy Symposium



Presented by C.A.W, Inc.

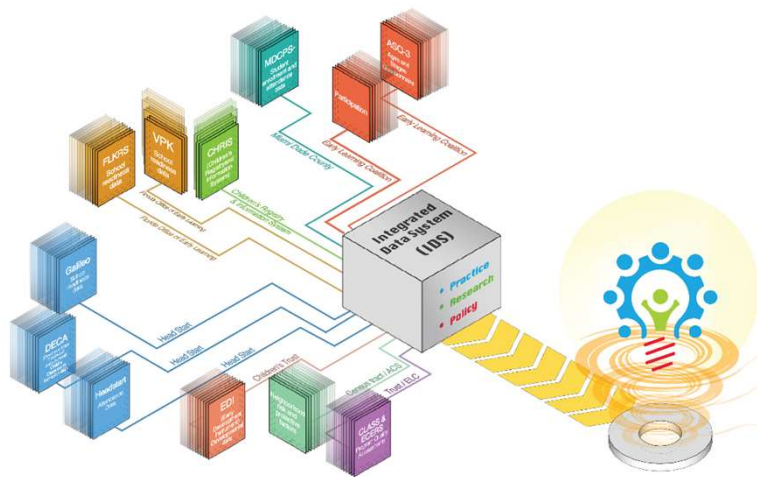
IDEAS.miami.edu



MIAMI-DADE
IDEAS
 CONSORTIUM
 FOR CHILDREN



INTEGRATING DATA FOR EFFECTIVENESS ACROSS SYSTEMS

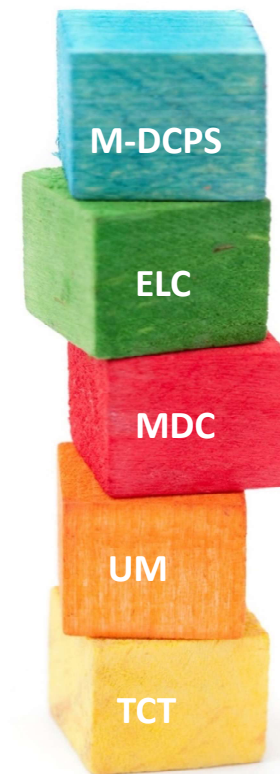


Collective Impact to Improve Child Outcomes

SHARED GOAL

To improve services for all children in Miami-Dade, from birth through age 8, by aligning information from multiple programs supporting them and their families.

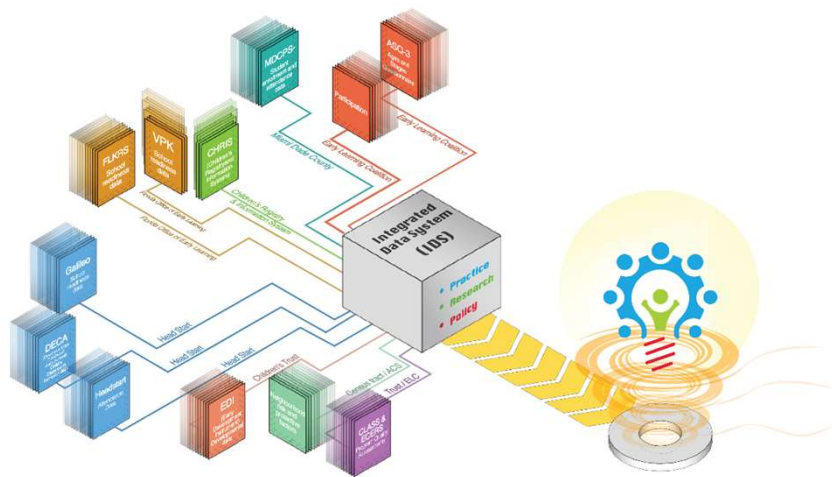
IDEAS.miami.edu



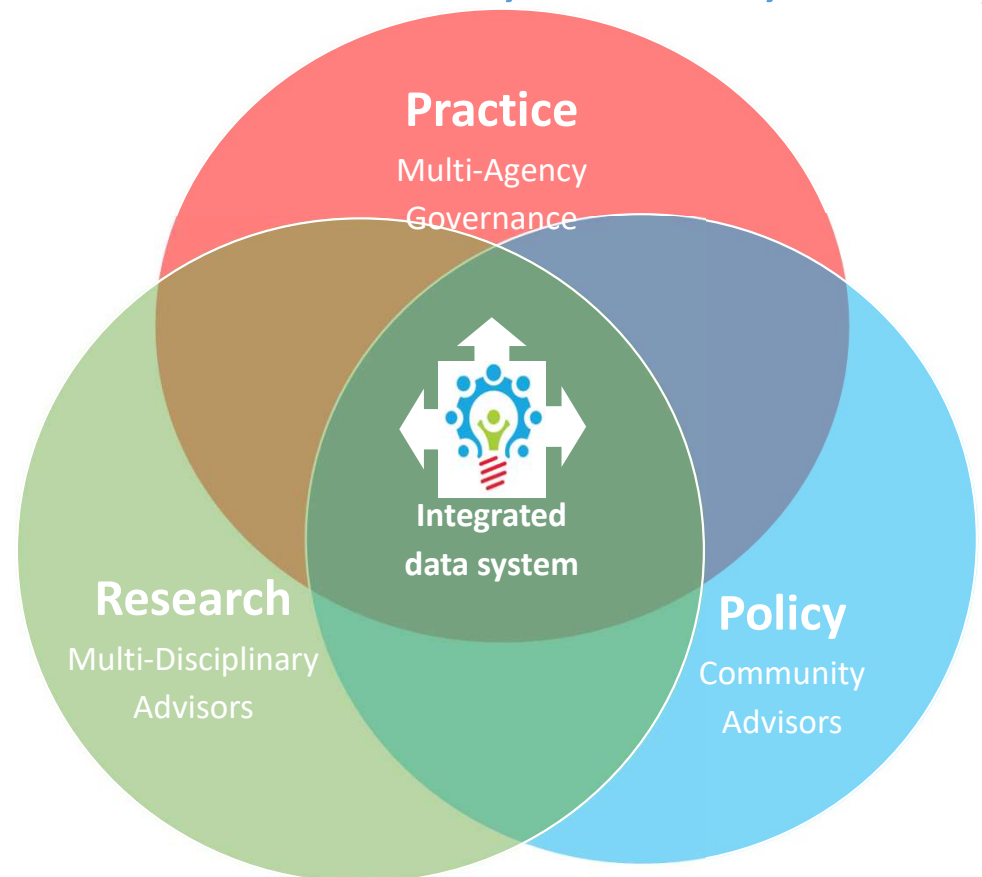
MIAMI-DADE
IDEAS
 CONSORTIUM
 FOR CHILDREN



INTEGRATING DATA FOR EFFECTIVENESS ACROSS SYSTEMS



Using Integrated Data to Align Early Childhood Practice, Research, & Policy

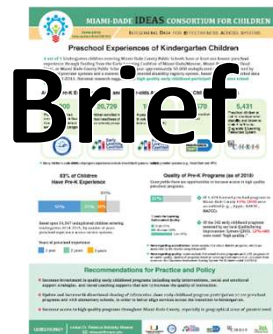


IDEAS.miami.edu

MIAMI-DADE
IDEAS
CONSORTIUM
FOR CHILDREN



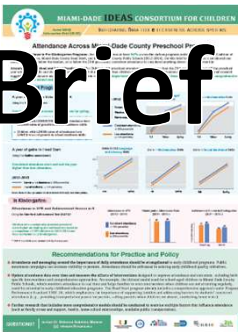
INTEGRATING DATA FOR EFFECTIVENESS ACROSS SYSTEMS



Brief 1

4 in 5 Miami-Dade children are touched by a range of early childhood programs.

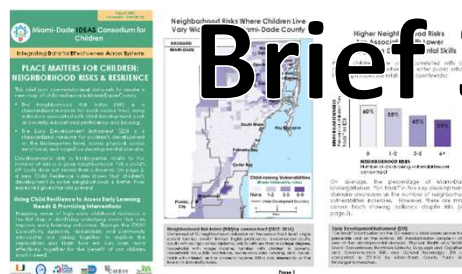
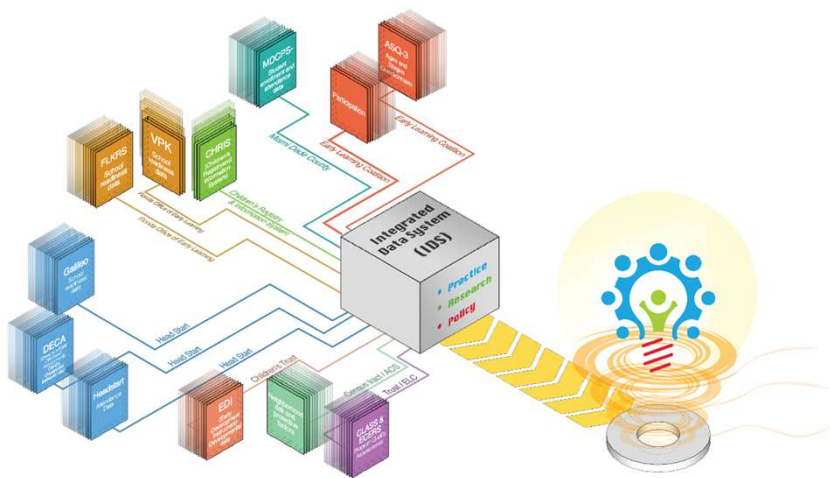
83% of Kindergarteners had services (2015);
One 1 in 3 programs accredited (31% of 1,474 licensed);
Few of those rated achieve "high quality" (40 of 342 rated).



Brief 2

Consistent attendance matters.

Consistent attendees exceed expectations in pre-K;
Lower consistency, lower outcomes (pre-K, HS);
Pre-K attendance evident in K outcomes.



Brief 3

Zip code matters.

Risks vary widely by census tract;
Higher risks, lower K outcomes;
Some areas exceed expectations.

MIAMI-DADE
IDEAS
CONSORTIUM
FOR CHILDREN



INTEGRATING DATA FOR EFFECTIVENESS ACROSS SYSTEMS

Some Next Steps: Neighborhood Focus, Child Resilience, & Long-Term Crisis Impacts

Why do children in some high-risk areas exceed expectations? **Using the IDEAS child resilience index to unpack Miami-Dade racial equity.**

How can all parents navigate the complexity of early learning opportunities? **A "big picture" tool to help Haitian families access early childhood services.**



What impacts will the COVID-19 crisis have on young children? **Laying the foundation for long-term analysis with other integrated data sites.**

IDEAS.miami.edu

MIAMI-DADE
IDEAS
CONSORTIUM
FOR CHILDREN



INTEGRATING DATA FOR EFFECTIVENESS ACROSS SYSTEMS

Today's Breakout: Designing an Early Learning Mapping Tool with a Focus on the NE Corridor

How can all parents navigate the complexity of early learning opportunities? **A "big picture" tool to help Haitian families access early childhood services.**



Thank you to Our Funders

The Children's Trust
University of Miami U-LINK
The Miami Foundation (with Sant La)
IES funding Award # R305H140140

Welcome

- Tiffany Cannava, Together for Children NE Corridor EL Committee
- Rebecca Bulotsky Shearer UM / IDEAS Consortium

Presentation

- Chris Mader & Deepthi Puram, UM Inst. for Data Science & Computing

Moderators

- Leonie Hermantin, Sant La
- Mark Needle, IDEAS Consortium

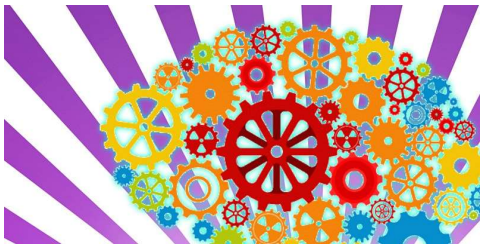
Coordinator

- Astrid Pena Perez, UM / IDEAS Consortium

IDEAS.miami.edu



The 3rd Biennial
 National Synergy Symposium



Presented by C.A.W, Inc.

Today's Breakout: Designing an Early Learning Mapping Tool with a Focus on the NE Corridor

