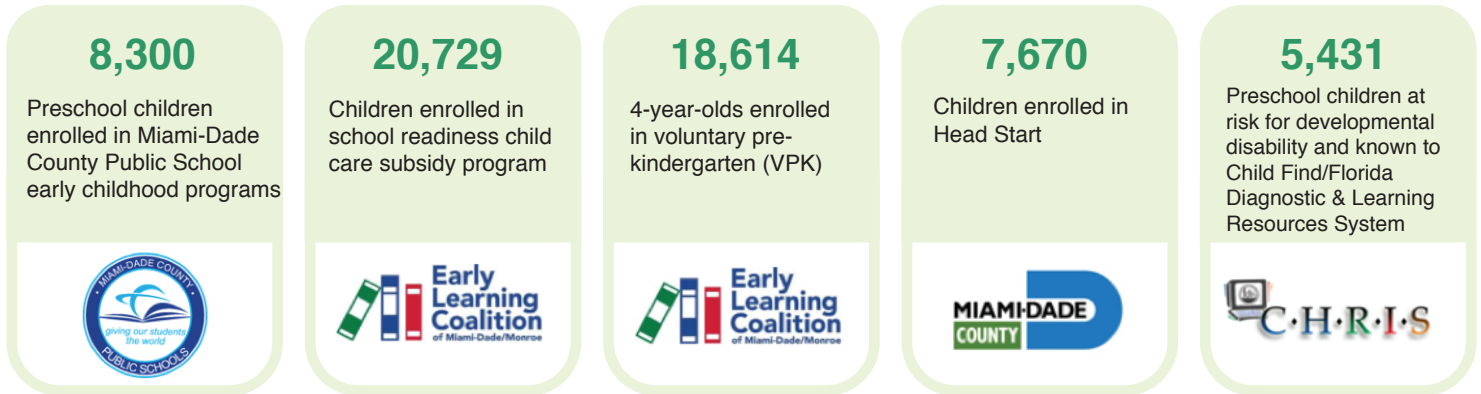




Preschool Experiences of Kindergarten Children

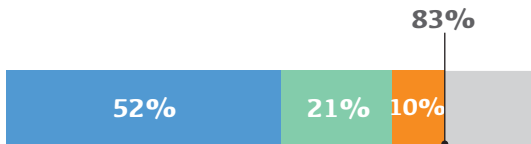
4 out of 5 kindergarten children entering Miami-Dade County Public Schools have at least one known preschool experience through funding from the Early Learning Coalition of Miami-Dade/Monroe, Miami-Dade County Head Start, or Miami-Dade County Public Schools. Each year approximately 50,000 unduplicated children are served by five local provider systems and a statewide developmental disability registry system, based on analysis of linked data from 2013-2015. National research suggests that **high quality early childhood participation promotes school readiness.**

Annual Pre-K Enrollment for 3 and 4-year-olds Across Five Early Childhood Systems



● Many children's early childhood program experiences include mixed funding across multiple provider systems (e.g., Head Start and VPK).

83% of Children Have Pre-K Experience



Based upon 24,947 unduplicated children entering kindergarten 2014-2015, by number of years preschool experience across service systems.

Years of preschool experience

■ 1 year ■ 2 years ■ 3 years

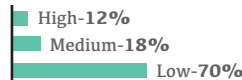
Quality of Pre-K Programs (as of 2015)

Countywide there are opportunities to increase access to high quality preschool programs.



◆ Of 1,474 licensed preschool programs in Miami-Dade County **31% (450)** were accredited (e.g., Apple, NAEYC, NAFCC).

3 levels for Learning Environment Quality



◆ Of the 342 early childhood programs assessed by our local Quality Rating Improvement System (QRIS), **12% (40)** were rated "high quality."

- **Note regarding accreditation:** totals exclude 214 school district programs, which are accredited by the district using AdvanceED.
- **Note regarding quality:** totals exclude 214 school district programs and 1,132 programs of unknown quality. Quality of programs based on Learning Environment level calculated from scores on the Classroom Assessment Scoring System Pre-K (downloaded 12/2015).

Recommendations for Practice and Policy

- ◆ **Increase investment in quality early childhood programs including early interventions, social and emotional support strategies, and tiered coaching supports that aim to increase the quality of instruction.**
- ◆ **Update and increase bi-directional sharing** of information about early childhood program participation across preschool programs and with elementary schools, in order to better align services across the transition to kindergarten.
- ◆ **Increase access to high quality programs** throughout Miami-Dade County, especially in geographical areas of greatest need.